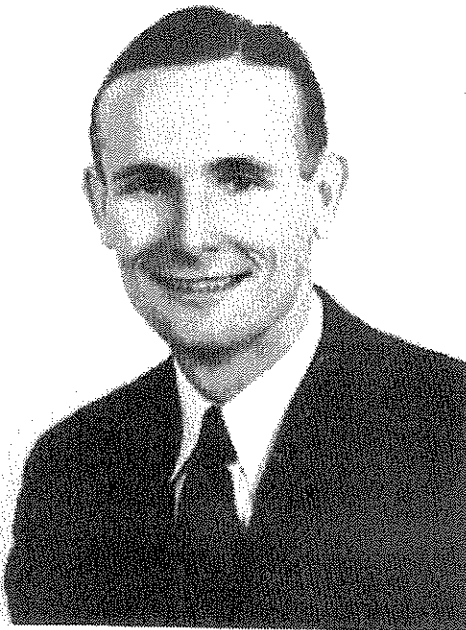


Coach, you've been swell to me,
even tho you've teached me to
death. I've enjoyed this school year
more than any other. - Sue

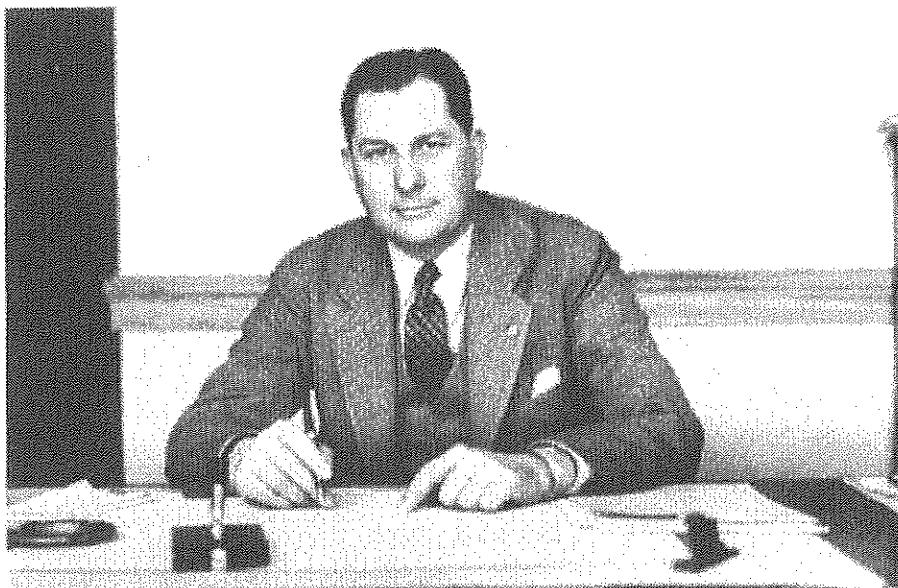


G. E. (Tommy) Thompson

DEDICATION

Because of his high ideals, friendly advice, and
staunch belief in the building of fine character in
boys and girls, with love and appreciation we
dedicate the 1939 Sandstorm to

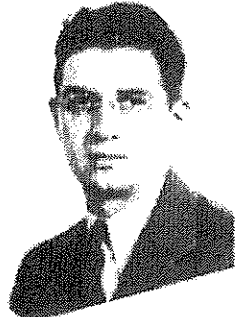
G. E. (Tommy) Thompson



B. F. Meek, Superintendent

Of the hundreds of students who participate in our school life from year to year, each brings his own unduplicated set of problems, each has his own experiences and carries away minutely varied results. It is my hope that the faculty has been able to prevent some experiences and direct and bring about others that have been adapted to your individual differences and that each of you, on graduation, will carry ideals, educational experiences, and a "treasury of human values" which will aid you in your pursuit of happiness and complete living.

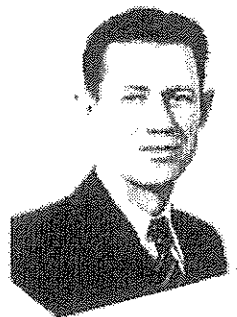
B. F. Meek, Supt.



R. M. LILLY, PRESIDENT



W. E. GOMBROWS, VICE-PRESIDENT

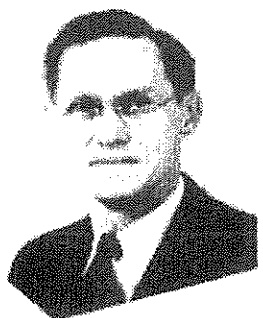


J. E. STORDIVANT, SECRETARY

SCHOOL BOARD



G. C. OLSEN

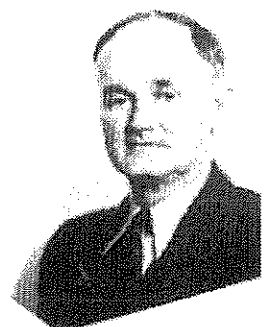


J. B. WALTON

J. J. HILLHOUSE



S. M. HALLEY

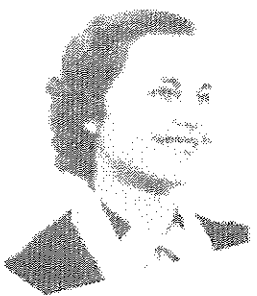


*The Best of Times
with the Best of Friends
Misses - Caudill*

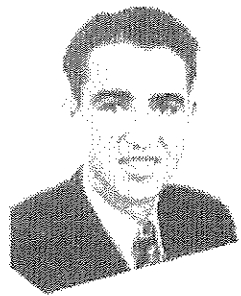


G. E. THOMPSON, B.A.
HIGH SCHOOL PRINCIPAL
B.A., YALE UNIVERSITY, 1937
GRADUATE WORK UNIVERSITY OF
TEXAS

WILSON WHEAT, B.S.
GRADUATE AND GRADUATE
B.A., DANIEL BAIRD COLLEGE
GRADUATE WORK TEXAS TECH.



JOHN A. KELLY, D.A.
LITERATURE
D.A., HARVARD UNIVERSITY, 1937
GRADUATE WORK TEXAS TECH.
GRADUATE WORK TEXAS



WILL DENNEY, B.S.
JOURNALISM AND HISTORY
B.S., HARVARD UNIVERSITY,
1937
GRADUATE WORK UNIVERSITY
OF TEXAS

H. E. BOHLEN, B.A.
PHYSICAL EDUCATION
B.A., TEXAS TECH.



BRUCE BOND, D.A.
LITERATURE AND SPEECH
D.A., HARVARD UNIVERSITY,
1937
GRADUATE WORK
HARVARD UNIVERSITY,
1937
STATE COLLEGE FOR
WOMEN

H. N. COFFLAND, B.A.
BAND DIRECTOR
B.A., HARVARD UNIVERSITY, 1937
GRADUATE WORK HARVARD COLLEGE
SCHOOL OF MUSIC



SIEN PINHAM YOUNG,
B. S., M. E.
1901-24
B. S., EAST TEXAS STATE
TEACHING COLLEGE
MAY, GEORGE STARBUCK COL-
LEGE, DALLAS, TEX.
GRADUATE WORK VANDERBILT
UNIVERSITY



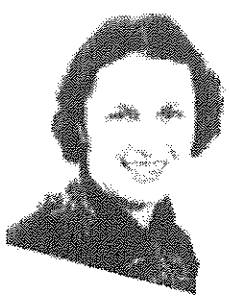
CARROLL BARBAM, B. A.
MATHEMATICS
B. A., HOWARD PAYNE, 1931
ASSISTANT CHAIR

J. F. HAWLEY, B. S.
INDUSTRIAL ART
B. S., TEXAS A. & M. 1931
TECHNICAL DRAWING AND SHOP



BO GALLONAY, B. S.
HISTORY AND GENERAL SCIENCE
FACULTY COACH
B. S., BRINKLEY UNIVERSITY
1931
GRADUATE WORK UNIVERSITY
OF TEXAS

LORINNE PERKINS, B. S.
HIGHER EDUCATION
B. S., TEXAS STATE COLLEGE
FOR WOMEN



ANN SHUTTLESWORTH, B. S.
HOME ECONOMICS INSTRUCTOR
B. S., TEXAS TECH, 1931
GRADUATE WORK AT TEXAS TECH.

EIMO GLASS, B. A.
SCIENCE AND MATHEMATICS
B. A., EAST TEXAS STATE, 1931