

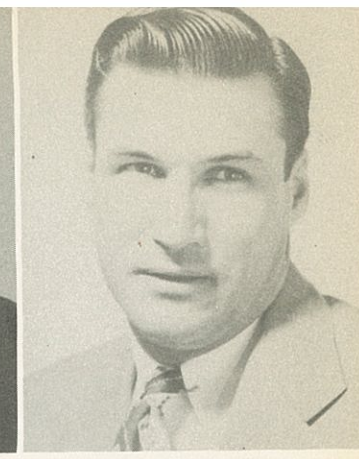
BOBBIE LAKE  
*Speech, Occupations*  
E.T.S.C.—B.S.

S. J. LOVELL  
*Industrial Arts*  
W.T.S.T.C.—B.S.—M.A.



IRENE WILSON  
*Commercial*  
N.T.S.C.—B.S.

JAMES GREEN  
*Social Studies*  
E.T.S.T.—M.S.



D. M. MAYER  
*Social Studies,  
Coach*  
Bethel College—A.B.

JEWELL MARTIN  
*English, Journalism*  
Trinity Univ.—A.B.



JOSEPHINE ANDERSON  
*Girl's P.E.*  
N.T.S.C.—B.S.

WOODLEIGH CHAMPION  
*Science, Math*  
San Marcos—B.S., M.S.



OLLIE PATTEN  
*Art*  
Okla. A.&M.—B.S.,  
M.S.

RAYMOND RUCKER  
*Mathematics*  
Howard Payne—B.A.



IRVIN CLAYTON  
*Arithmetic*  
McMurry—B. S.  
N.T.S.C.—M.S.

URADEAN BESHERS  
*Language*  
N.T.S.C.—B.S.



ROBERT SHELTON  
*Biology, Coach*  
Rice Institute—B.S.

CHRISTINE STEWART  
*Librarian*  
Texas Tech—M.A.  
T.S.T.C.—B.S., L.S.



ANNE BRUTON  
*Language*  
E.T.S.C.—B.A.

BILLY MAX FELTY  
*Science*  
E.T.S.C.—B.S.