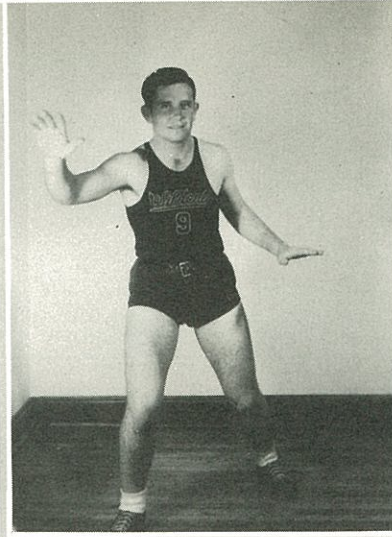
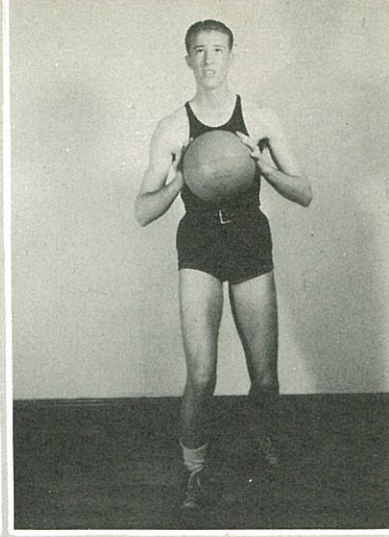


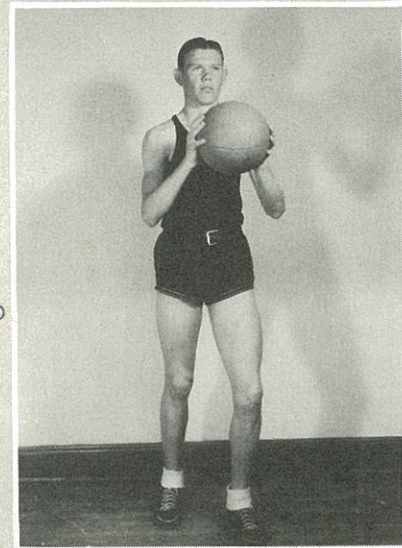
J. R. CALLAHAN  
FORWARD



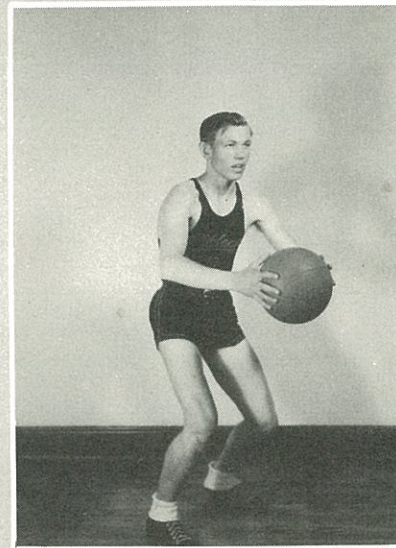
BOB ALBERDING  
GUARD



EDGAR CAMPBELL  
FORWARD

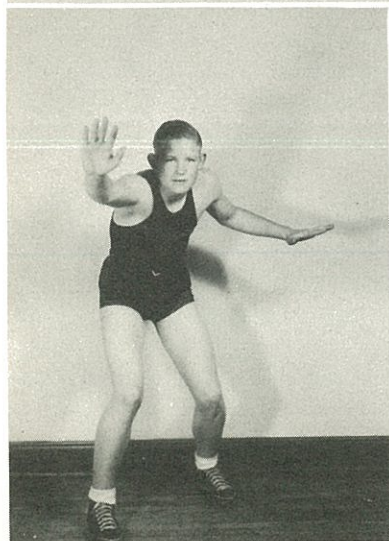


ORVAL LEE  
YOUNGBLOOD  
FORWARD

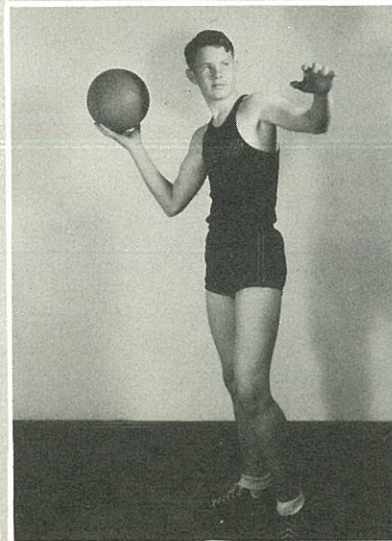


BOBBY  
EDWARDS  
FORWARD

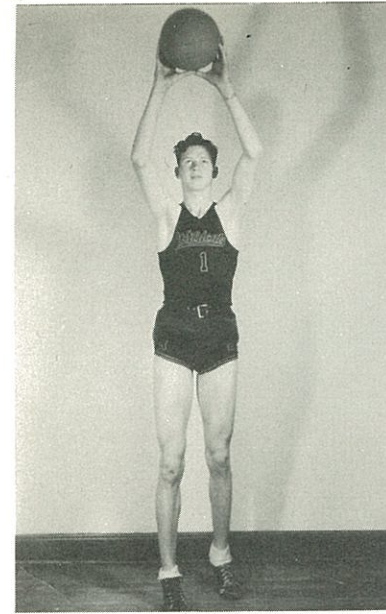
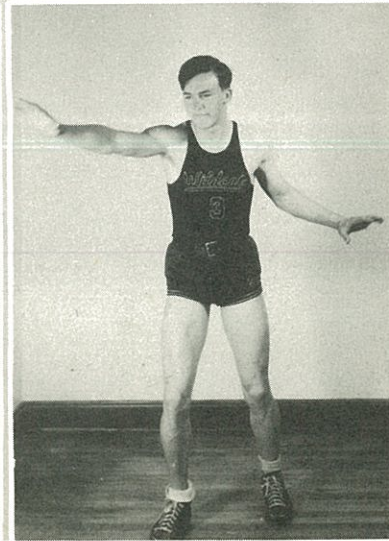
EVERETT WALDRUM  
GUARD



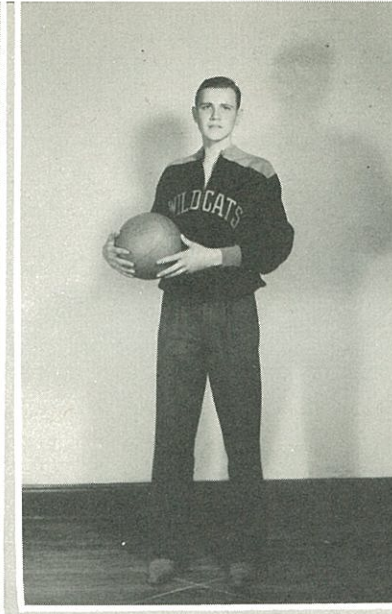
F. D. PRATER  
FORWARD



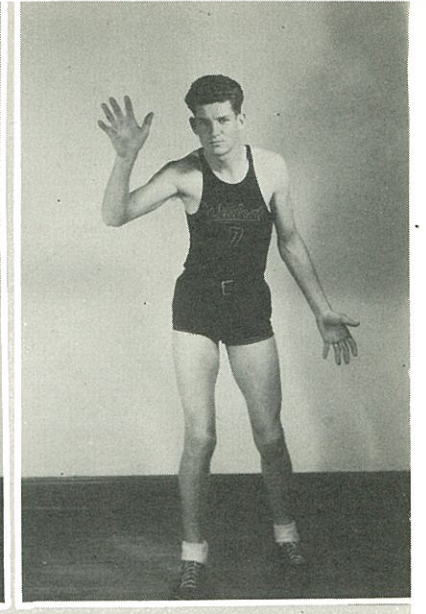
DON TORRANCE  
GUARD



BILLY JOHNSTON  
CENTER



R. D. SLAY  
MANAGER



DEWEY LANGSTON  
CENTER

DUE TO A VERY SUCCESSFUL AND PROLONGED FOOTBALL SEASON THE BASKETBALL TEAM GOT OFF TO A LATE START, WHICH WAS SOME FIVE OR SIX WEEKS AFTER MOST SCHOOLS HAD ISSUED UNIFORMS.

THREE LETTERMEN FROM LAST YEAR'S TEAM REPORTED FOR PRACTICE AND FORMED THE NUCLEUS FOR THE TEAM; ALSO THEY LED THE WILDCATS TO ANOTHER WINKLER COUNTY CHAMPIONSHIP OVER KERMIT.

AS THE SEASON PROGRESSED SO DID THE MEMBERS OF THE SQUAD THAT WERE PLAYING BASKETBALL FOR THE FIRST TIME. THE TEAM BECAME A HIGHLY EFFICIENT ORGANIZATION THAT WAS SUCCESSFUL IN WINNING A MAJORITY OF ITS GAMES. SUCH TEAMS AS ODESSA, MONAHANS, CRANE, PECOS, KERMIT AND MANY OTHER GOOD TEAMS FELL BEFORE THE EVER IMPROVING WILDCATS.

COACH PIERCE, A NEW MEMBER OF THE WINK PUBLIC SCHOOL STAFF, HAS DISTINGUISHED HIMSELF BY HIS EXCELLENT COACHING OF THIS SPORT AND THE FINE TEAM HE PRODUCED HAS CAUSED INCREASED INTEREST AMONG STUDENTS OF WINK HIGH SCHOOL FOR BASKETBALL.

WE, THE STAFF, WISH TO CONGRATULATE HIM AND TO WISH FOR HIM EVEN GREATER SUCCESS DURING THE SEASON OF 1940.