



Ethel Comegys  
Quiet and unassuming,  
neat, attractive  
smile, sweet and friendly.  
Activities: Glee  
Club, Dramatics, Home  
Ec. Club.



Thomas Connor  
"Dashing red head" a  
little on the hefty  
side, very friendly,  
a really swell kid.  
Activities: Football,  
Glee Club, Dramatics.



Dorsett Feyen  
Tall, dependable, polite,  
reserved, well-liked,  
willing worker.



Zelma Helms  
Sweet, red-headed  
nice actress, at-  
tractive, quiet,  
Activities: Band,  
Pep Squad, Glee  
Club, Dramatics  
Club.



Kristina Cooper  
Sweet, well  
liked by all,  
good disposition,  
all-around girl,  
completely sold  
on O.L.Y.  
Activities: Glee  
Club, Pep Squad,  
Volley Ball,  
Softball, Junior  
Play, Whirlwind  
Staff.



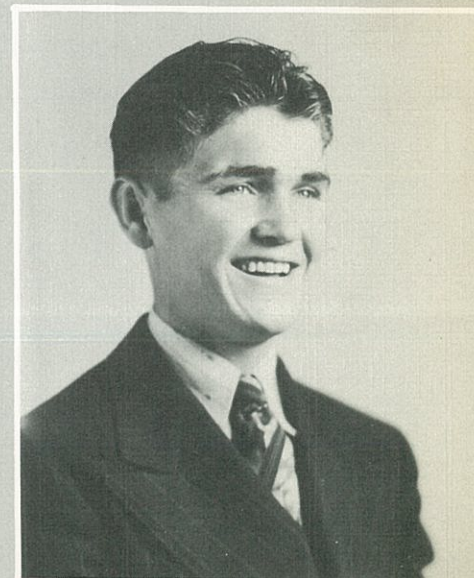
Virginia Henry  
Attractive, crazy  
about Oron, well-  
dressed, sweet,  
well-liked.  
Activities: Glee  
Club, Jr. Play,  
Pep Squad, and  
Whirlwind Staff.



Ruby Dendy  
Always merry, pic-  
turesque blonde with  
freckles, one of the  
sweetest girls in  
school, swell com-  
pany, good actress.  
Activities: Glee  
Club, Pep Squad, Jr.  
Play, Home Ec. Club,  
Whirlwind Staff,  
Annual Staff.



James Holly  
Very well-liked,  
always nice to  
have around, likes  
dancing and Ruby,  
awfully cute.  
Activities: Foot-  
ball, Basketball,  
Track, Softball.

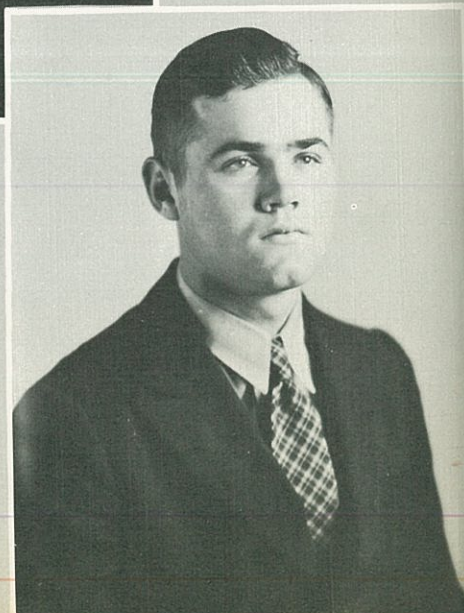


J. A. Horn  
Rather bashful, that "type"  
of hair, flattering, popu-  
lar, good athlete.  
Activities: Football,  
Track, Basketball.



Billie Ann Estabrook  
Charming blonde, ingenious,  
enthusiastic, talented  
musician, very sweet,  
modest, lovely hands.  
Activities: Band, Glee  
Club, Jr. Play, National  
Honor Society, Annual  
Staff, Volley Ball, Tennis.

Charles Divelbiss  
Everybody's pal, even  
tempered, rather timid  
with girls, good ath-  
lete, loyal and gener-  
ous.  
Activities: Football,  
Basketball, Track,  
Glee Club, Softball.



Eloise Jones  
Studious, dark-haired,  
nice, likeable, very  
sweet, reserved.  
Activities: Home Ec.  
Club, Pep Squad.