

Music



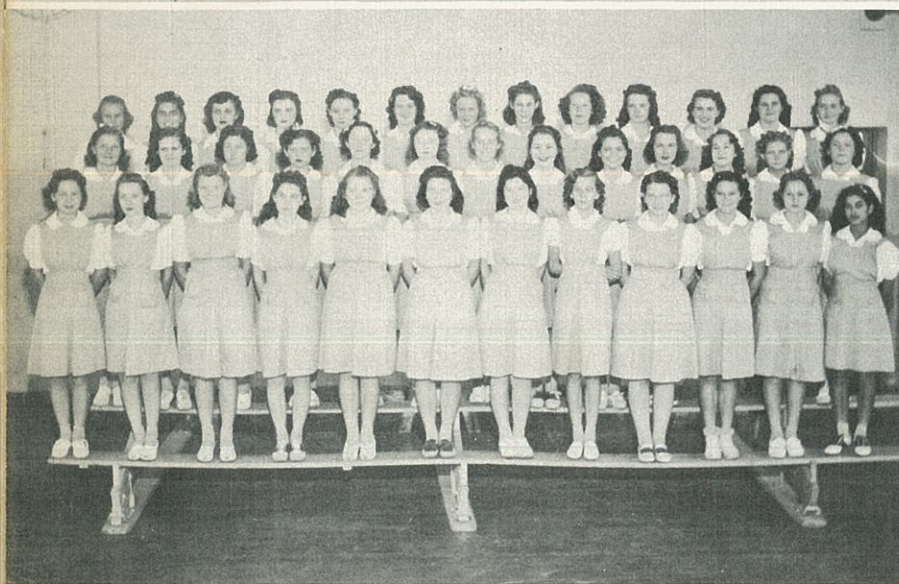
Gene Hemmle
Director



Senior Mixed Glee Club.

The Senior Mixed Glee Club grew from a membership of a few students in 1939 to the group pictured above. This group specialized in a cappella music and appeared on many programs during the year.

Shirley Waldron
Accompanist



Senior Girls' Glee Club.

The Senior Girls' Glee Club participated in many musical events of the school. They combined their voices with the mixed Glee Club in the pageant, "Why the Chimes Rang". From this group was formed special ensembles and soloists who performed in the competition festival and on special programs.

The Junior Mixed Glee Club provided the antiphonal singing in the annual Christmas pageant and sang three part music this year. The group appeared jointly with the Girls' Junior Glee Club in the competition festival.



Junior Mixed Glee Club



Junior Girls' Glee Club.

The Junior Girls' Glee Club alternated rehearsals with the Mixed Junior Glee Club before school each morning during the year. They worked untiringly on music of outstanding composers, and received thorough preparation for entrance into the High School Choral Groups.

Girls' Trio



The Girls' Trio was formed at mid-term, 1939, and through conscientious practice has developed a fine balance of excellent tonal qualities. This trio appeared in concerts, and were featured on all Glee Club appearances.