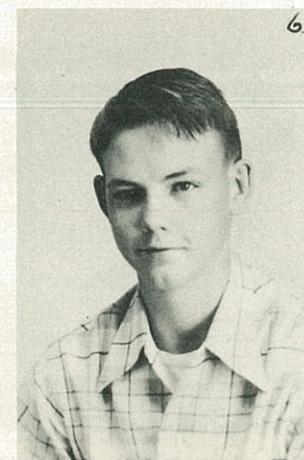
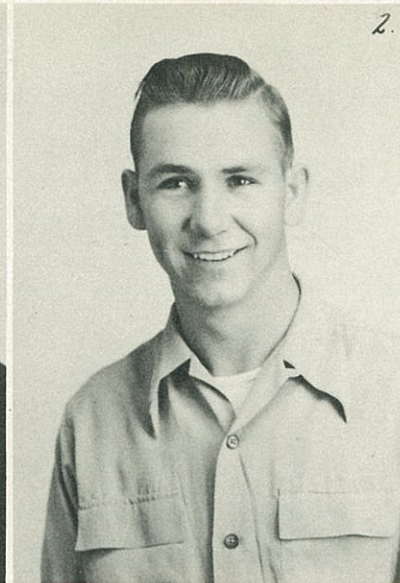


ANNUAL

- 1. Joan Franklin Co-Editor
- 2. John Phillip Bruce Cameraman
- 3. Quetana Newton Typist
- 4. Barbara Mackin Class Editor
- 5. Janet Pearson Feature Editor
- 6. Carl Sanders Ass't Business Manager
- 7. Don Dow Sport Editor



STAFF

- 1. Ramona Campbell Co-Editor
- 2. Jimmy Cooke Business Manager
- 3. Wanda Whitten Typist
- 4. Mary Nell Stanley Feature Editor
- 5. Thelma Abbey Sponsor
- 6. Harry Hanks Art Editor
- 7. Elisabeth Lee Copy Editor