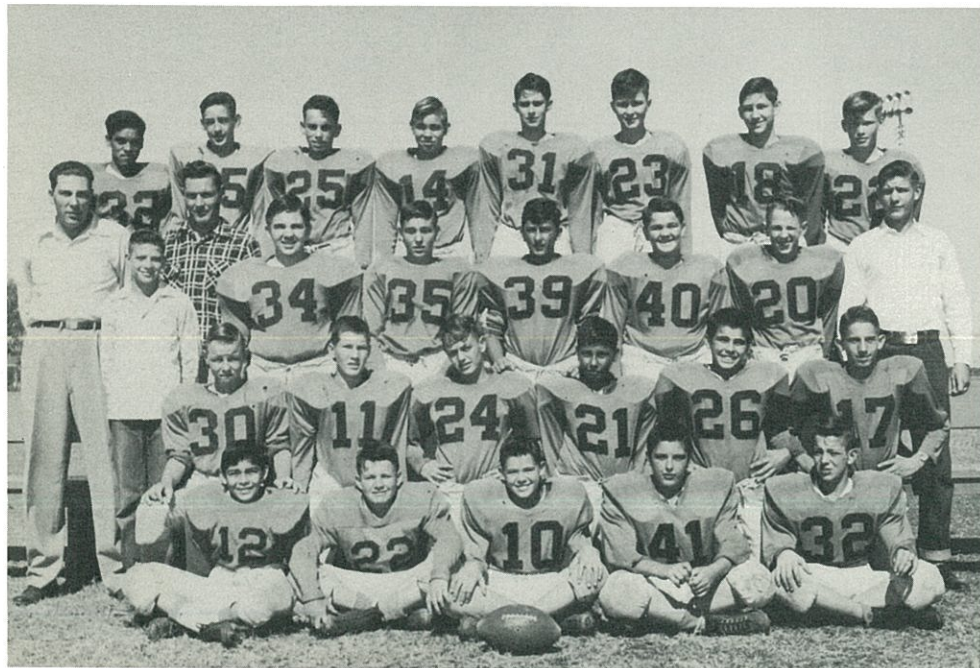


KITTENS



Top 1st. D. Ray, J. K. Hancock, J. Hook, D. Mitchell, T. Hodgett, L. Scott, D. DePrang, A. Morton, J. Bates
 2nd. J. Hill, D. Bullard, T. Hicks, B. Allen, B. Spencer, D. Wolf, A. Harman, F. Porter, L. Mitchell
 3rd. T. Davis, R. Claiborne, J. Wright, R. Thomas, H. Porter, D. Bates
 4th. J. McMillian, H. Davis, D. Clark, M. Ballard, J. Morgan



Top 1st. T. Hernandez, J. Marshall, O. Hallmark, C. Manning, E. Landry, E. Denman, L. Flowers, M. Clark
 2nd. J. Hill, D. Bullard, T. Hicks, H. Carrell, H. Morrow, John Blackwelder, H. Russell, P. Staley, L. Mitchell
 3rd. W. Pitts, C. Wilhelm, D. Sechrest, Jesse Blackwelder, B. Everett, B. Herricks
 4th. R. Gonzales, J. Hoskins, D. Dow, D. Everett, J. Glenn, D. Forga, W. Forga, not pictured

BASKET BALL



High School Squad

Back row: Barrett, Green, Morrow, C. Carman, Anthony, Ham, Halmark, Hatcher, Coach J. Hill.
 Front row: R. Ham, D. Hatcher, Ripper, Manning, Carman, Herricks, Forga.



Jr. High Squad

Back row: Coach Tatum, Pitts, Russell, Pallanes, Flowers, Hernandez, Dodd.
 2nd row: Everett, Hoskins, Wilhelm, Glenn, B. Everett.
 Front row: Beaty, Bates, Harman, Wright, Gonzales, Dow.