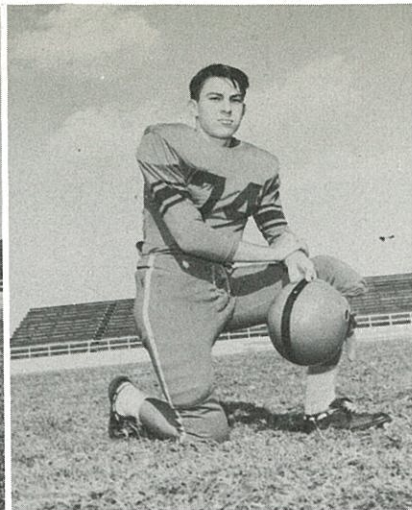


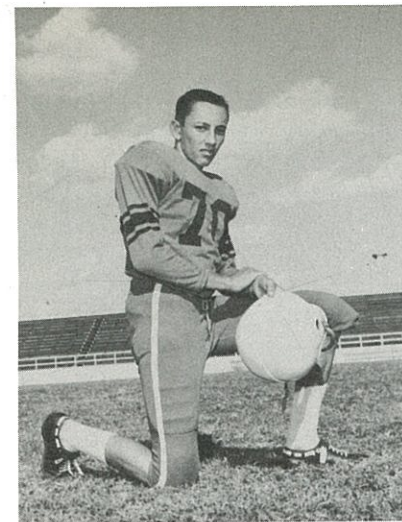
Billy Allen
Halfback - 130 lbs.
Sophomore



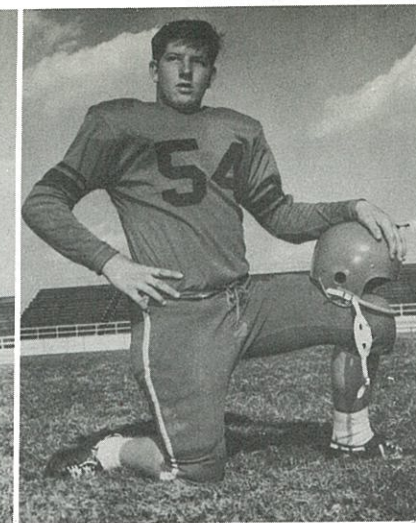
Billy Spencer
Center - 138 lbs.
Sophomore



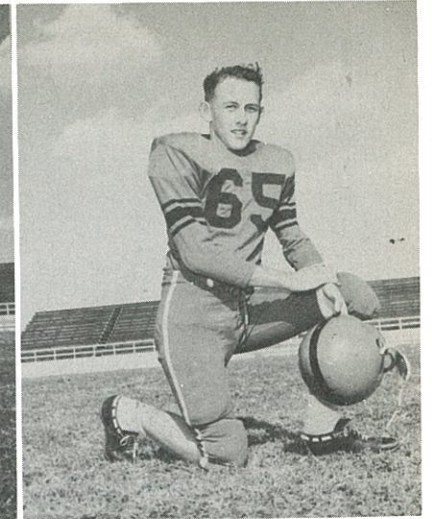
Jimmy Holloway
End - 130 lbs.
Junior



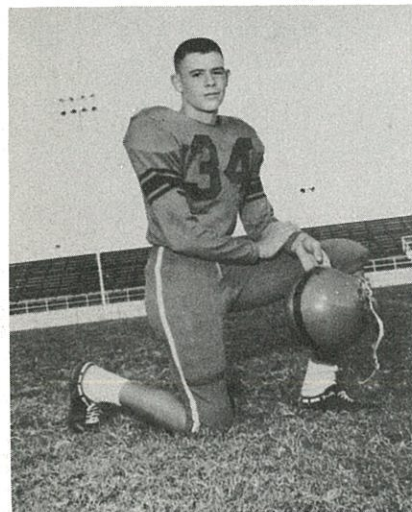
David Deprang
End - 114 lbs.
Sophomore



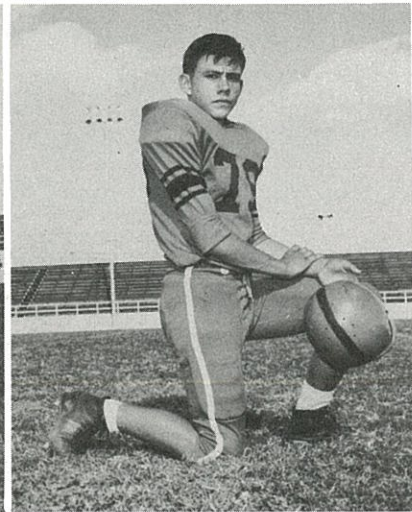
Johnny Hook
Tackle - 192 lbs.
Sophomore



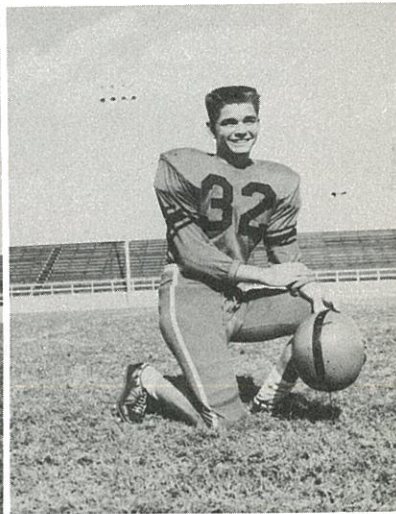
James Bates
Back - 132 lbs.
Sophomore



Dwight Dow
Quarterback - 135 lbs.
Sophomore



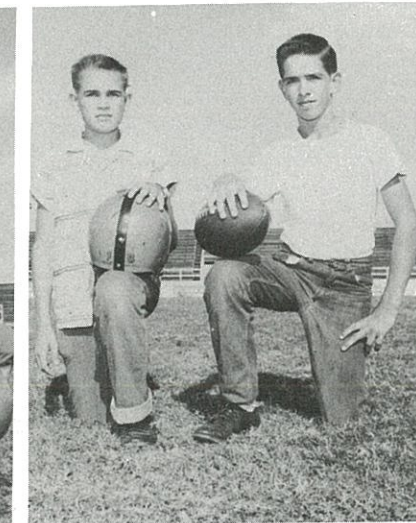
Allen Morton
Guard - 135 lbs.
Sophomore



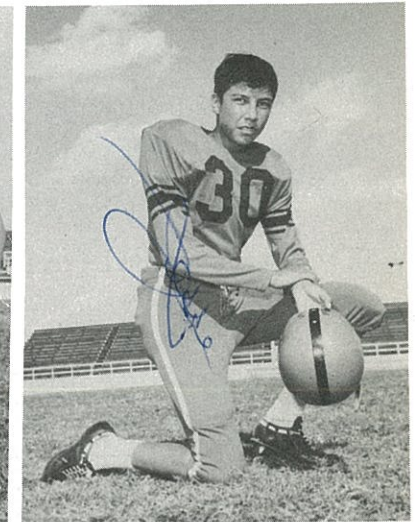
Harold Davis
Halfback - 120 lbs.
Sophomore



Raymond Patrick
End - 130 lbs.
Sophomore



James Foust - Frank Porter
Managers



Jesse Blackwelder
Back - 125 lbs.
Junior