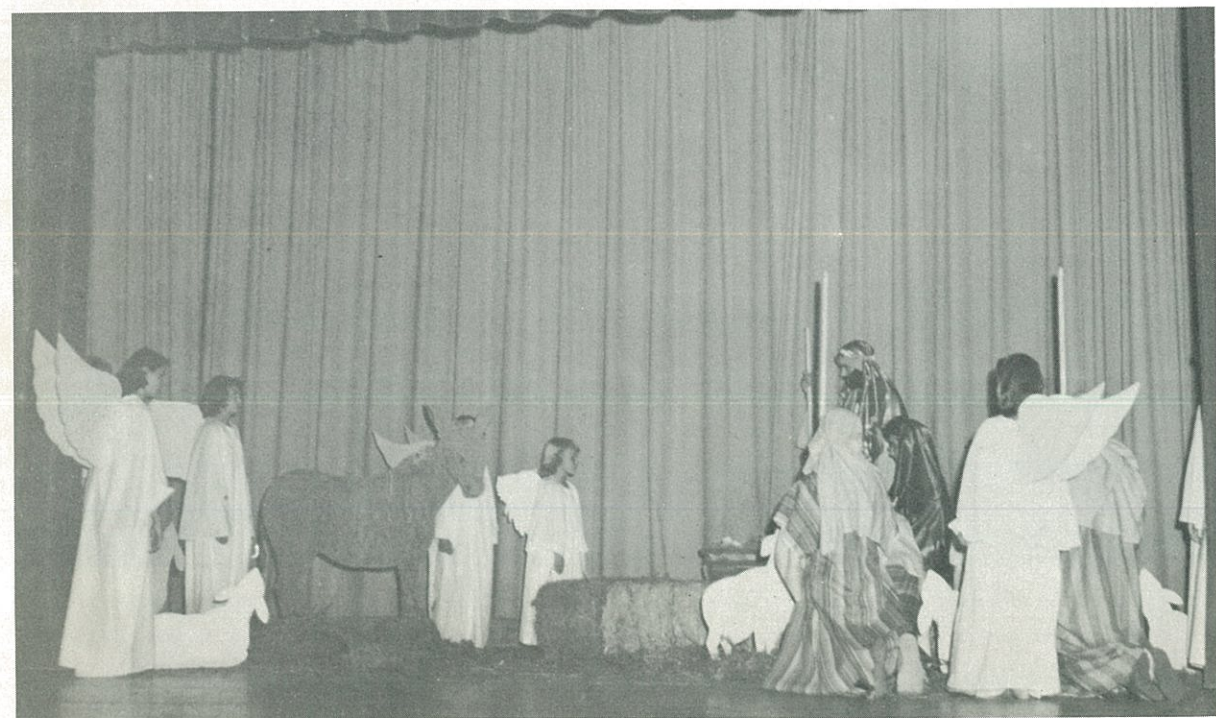


MARCHING BAND

First Division Rating

1958-59



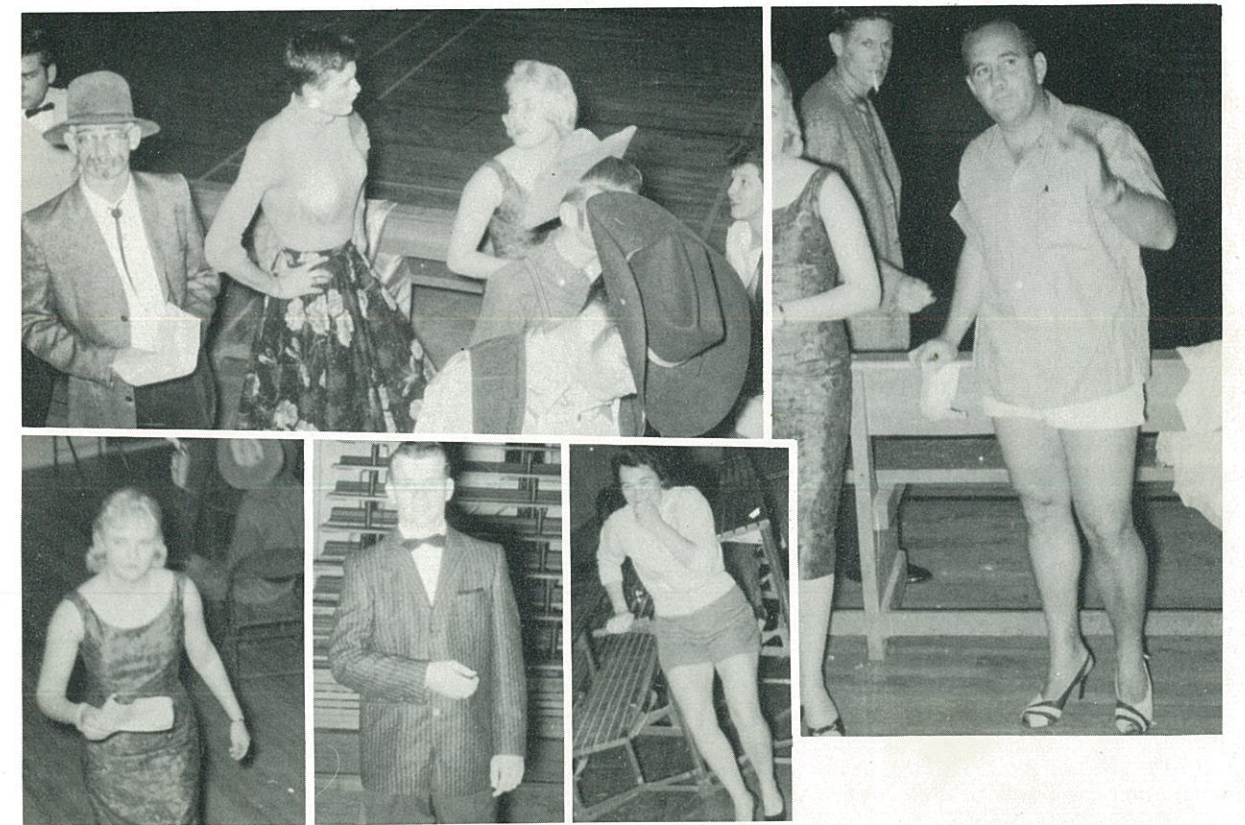
Scene from Glee Club's
CHRISTMAS PAGEANT



SPEECH CLASS PLAY - "THE TOUCHDOWN"

First Row: G. Laundry, J. Holloway, J. Hoskins.

Second Row: D. Ray, R. Gonzales, P. Wilhelm, L. Campbell, L. Tidwell, B. Phillips.



BEHIND THE SCENES AT THE TALENT SHOW