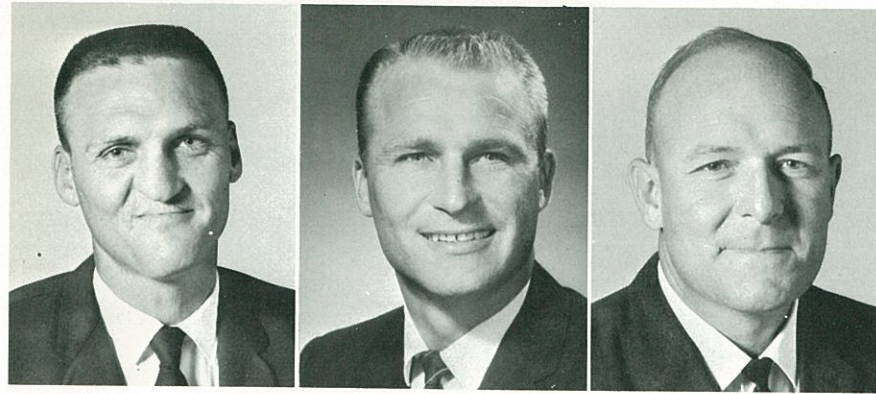


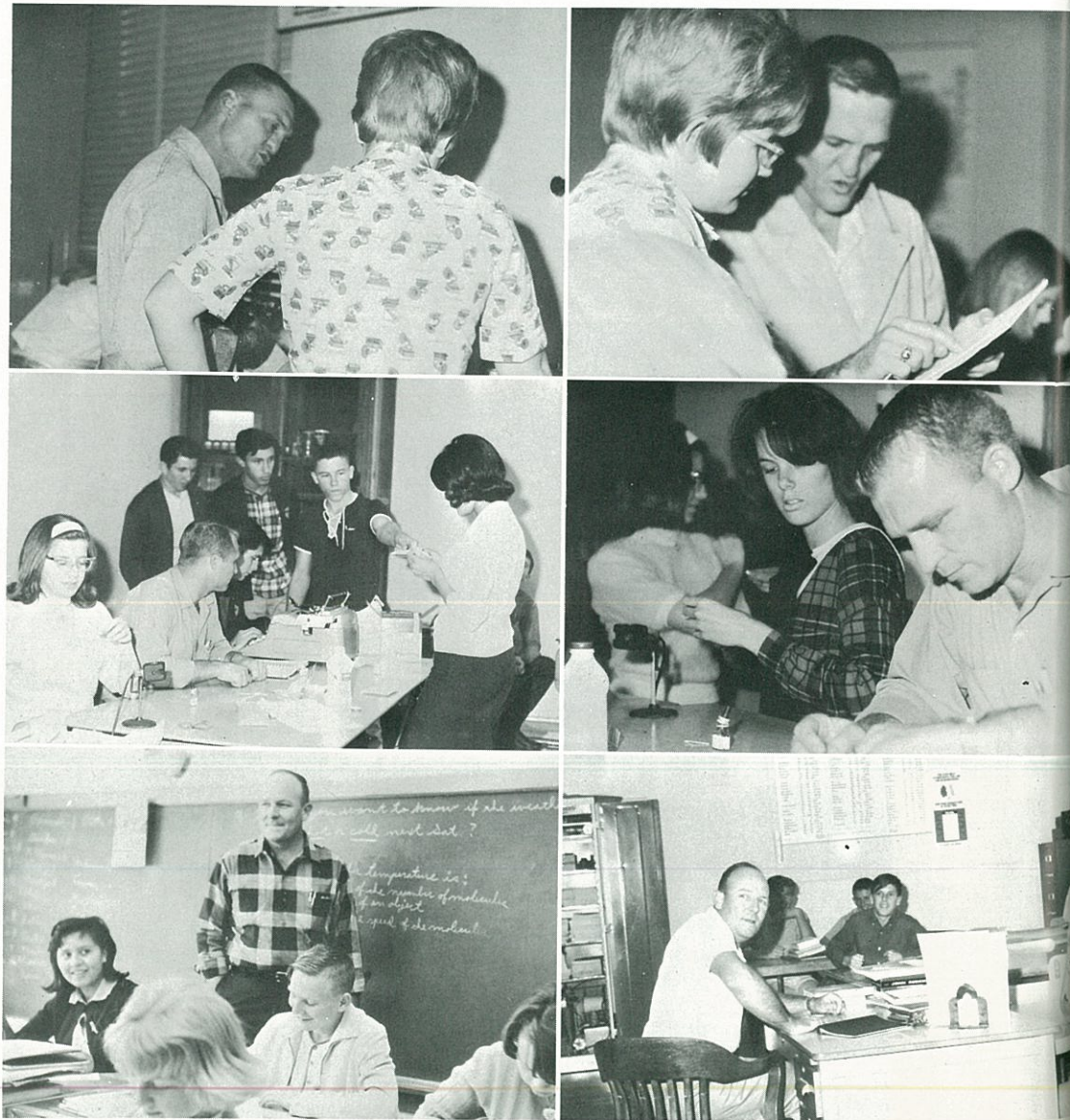
# SCIENCE PROVIDES KEY TO TOMORROW



PAUL JETTE  
Science, Coach  
B. A., E. N. M. U.

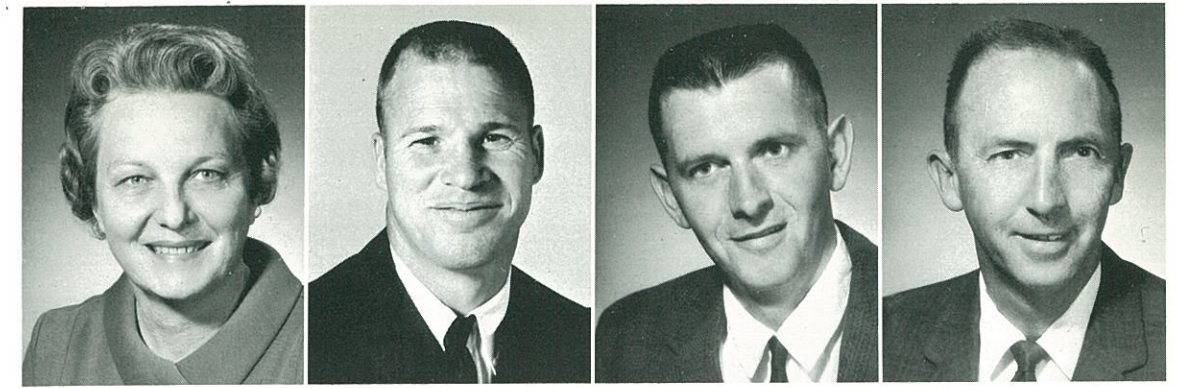
RONNIE SLAUGHTER  
Science, P.E.  
B. A., E. N. M. U.

BILL SPEAR  
Science 7-8, Coach  
M. E., Sul Ross



The tree of knowledge---eat thereof.

# NEW MATH FURNISHES NEW CONCEPT

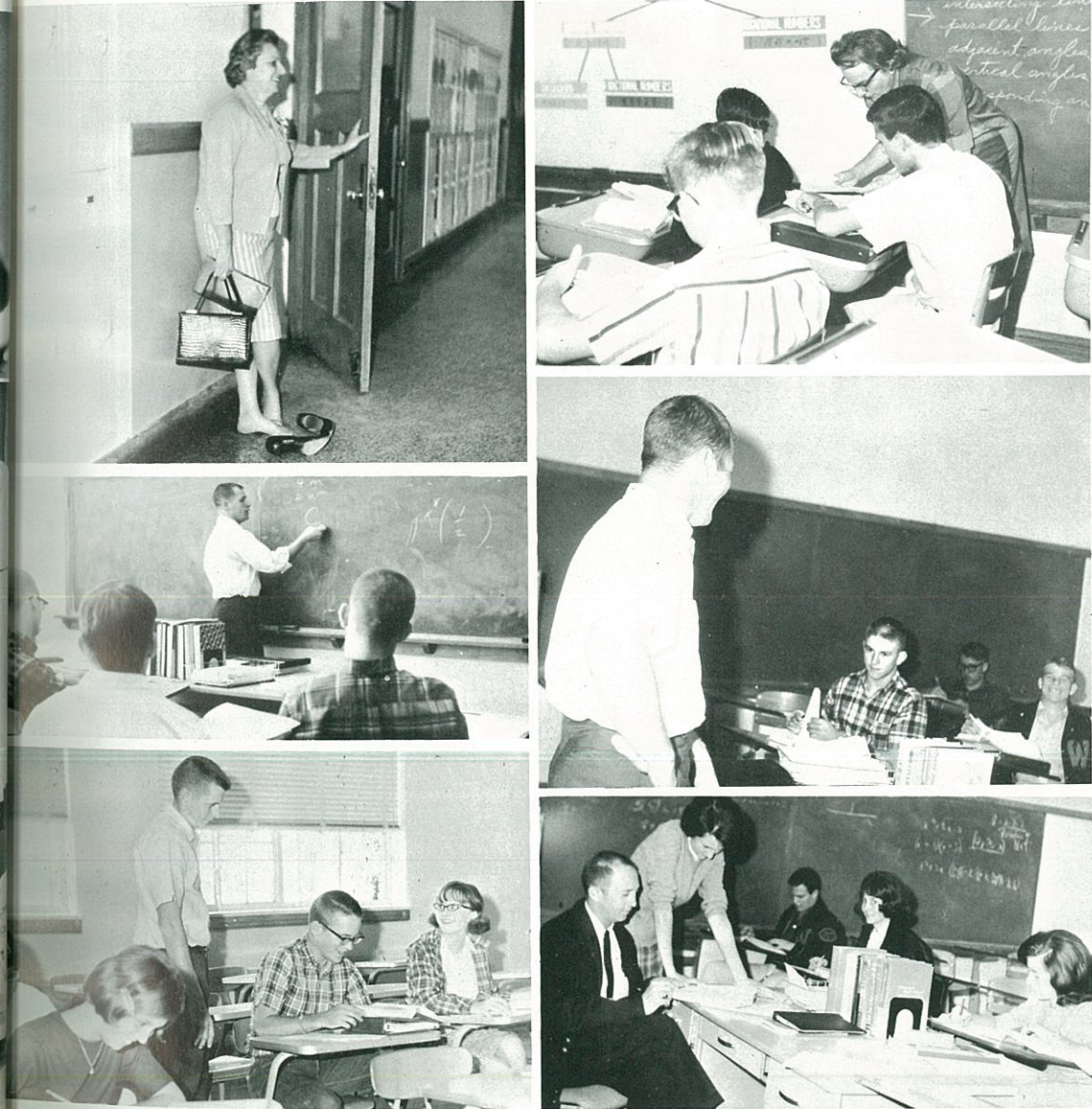


MRS. LILLIAN  
HAWKINS  
Math 7 & 8  
B. B. A., Texas Tech

MARVIN McSPADDEN  
Math, Coach  
B. S., Texas Tech

JOHN PATTERSON  
Math, Coach  
B. S. Sul Ross

TABOR ROWE  
Math, Head Coach  
M. A., N. T. S. U.



MATH MAKES MAN PERFECT AND READY TO MEET THE GODS.