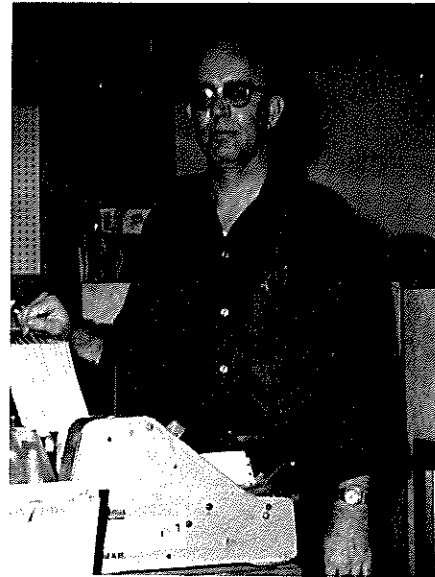


School Board Provides Leadership



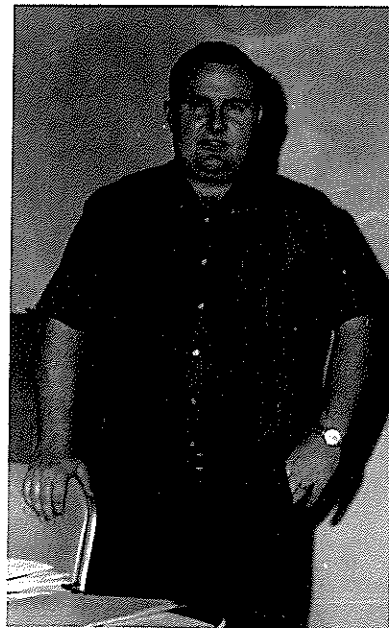
DAN AUSTIN
President



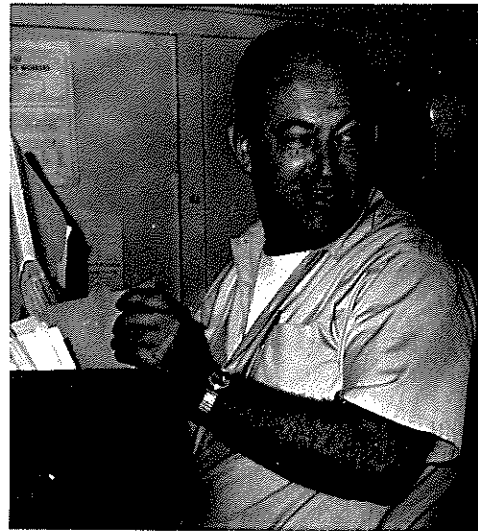
O. O. WHITTEN
Member



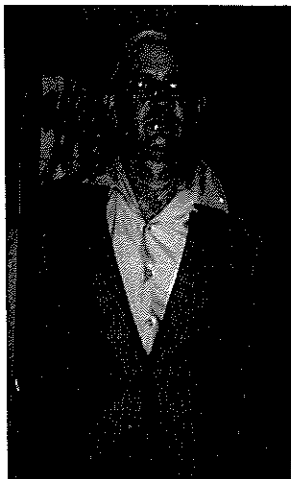
HENRY JONES
Member



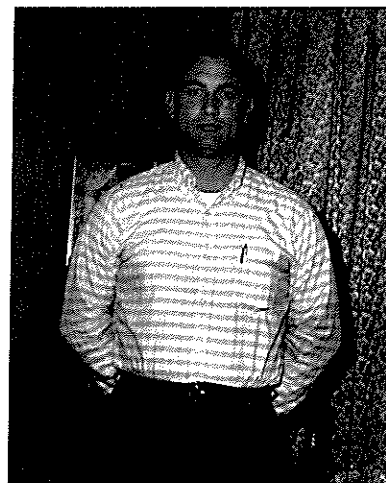
BILL BAIRD
Member



JOHN BOUNDS, Vice President



S. L. PATTERSON
Secretary



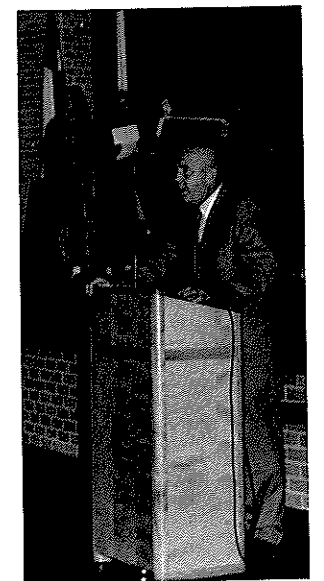
DALE CARMAN
Member

Superintendent Guides School Through 1969-70



Superintendent FRANK BARTON

Mr. Barton handles the difficult job of supervising the school and advising teachers and students.



Telling it as it is